

Flamma™ 456

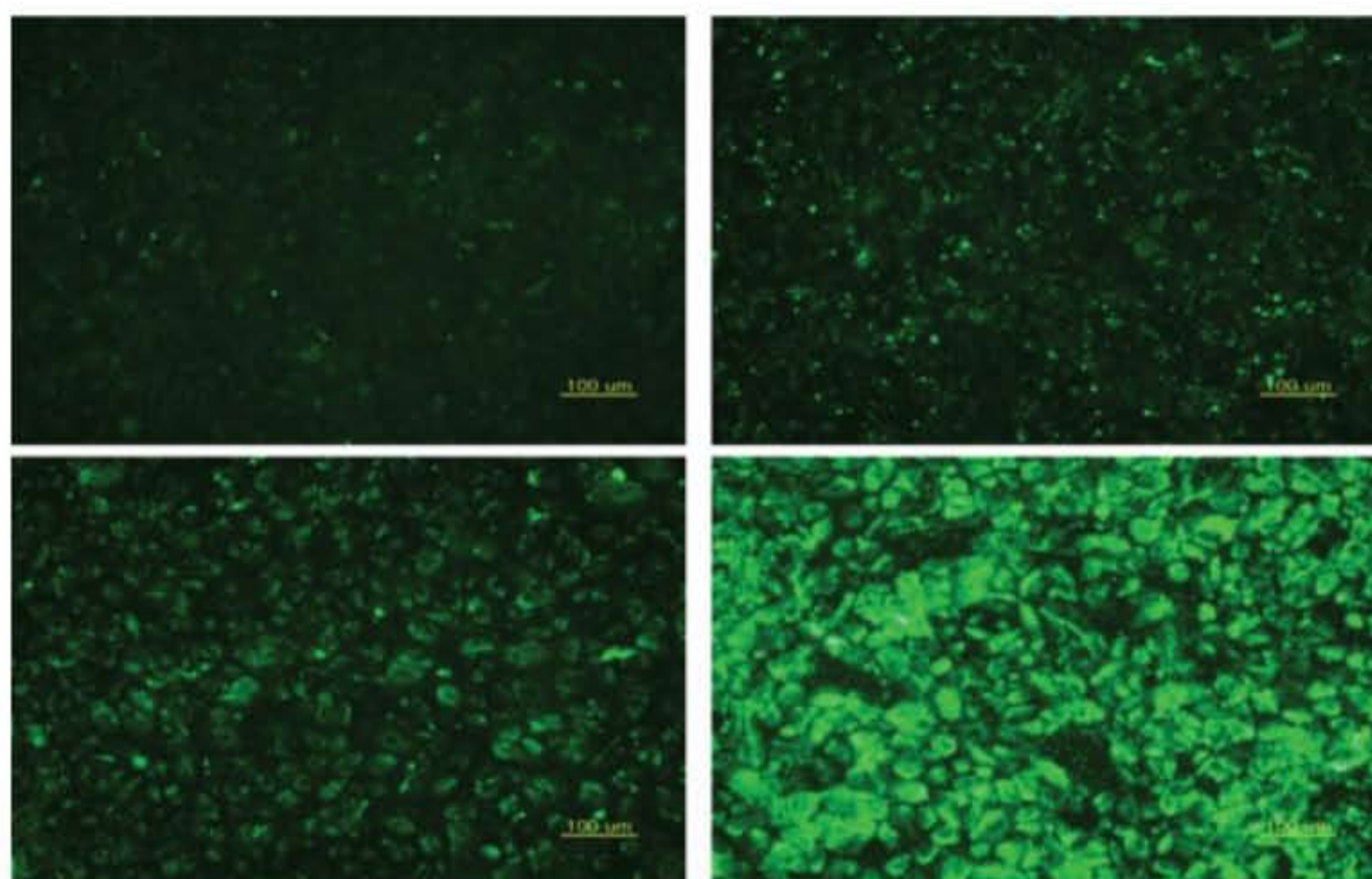
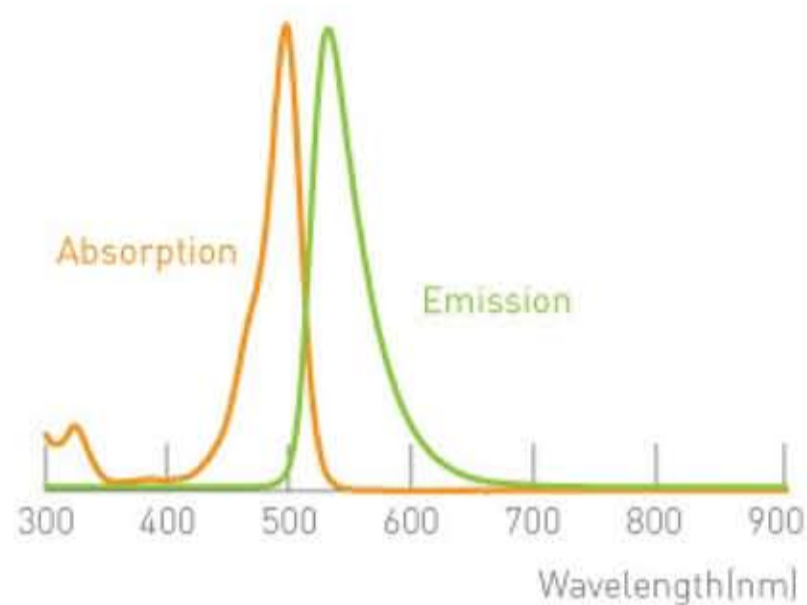
Optical Properties

- λ_{abs} : 495 nm
- λ_{em} : 529 nm
- ϵ_{max} : $5.29 \times 10^4 \text{ M}^{-1}\text{cm}^{-1}$
- Replacement for FITC, Alexa 488



Solubility

These Products can be dissolved in DMF, phosphate or carbonate buffer, and various biological buffers.



Product Name	Reactive Group	Code No.	Formula	MW g/mol	Purity
FPG-456	-	CWA1020	$\text{C}_{26}\text{H}_{25}\text{NO}_8\text{S}$	511.54	≥99%
FCG-456	Carboxylic acid	CWC1017	$\text{C}_{21}\text{H}_{14}\text{O}_7$	378.33	≥99%
FNG-456	NHS-ester	CWS1025	$\text{C}_{25}\text{H}_{17}\text{NO}_9$	475.40	-

* Product type : 5-isomer, 6-isomer, 5[6]-isomer