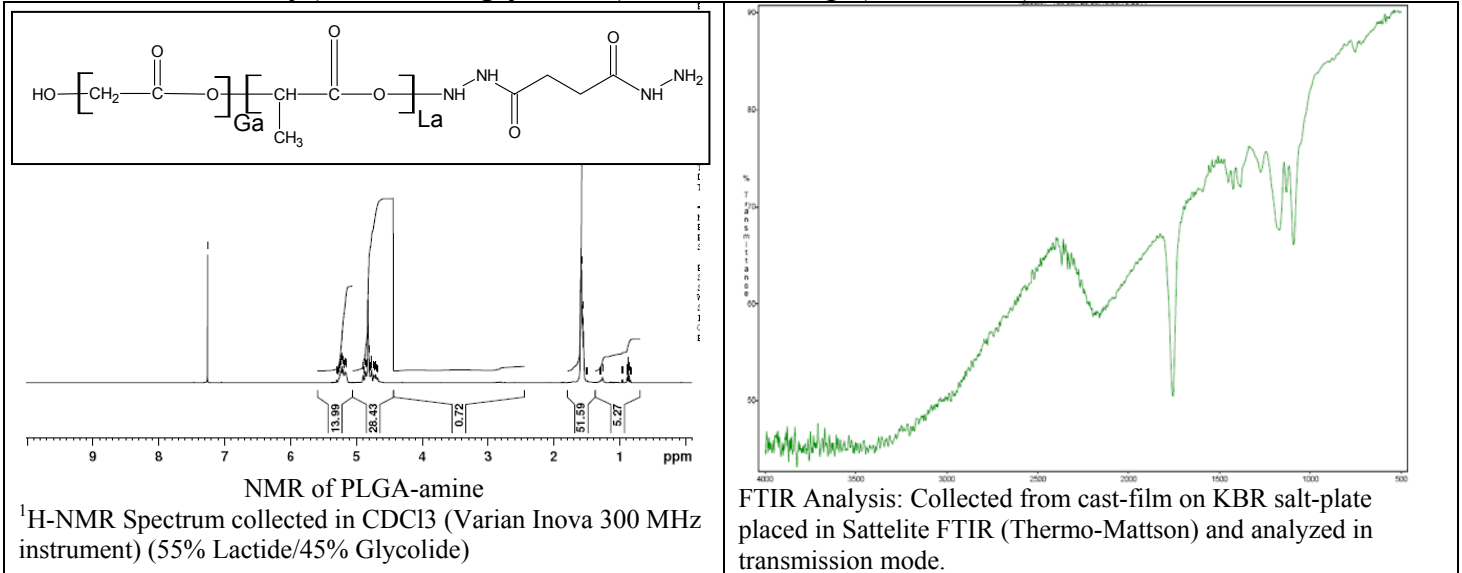


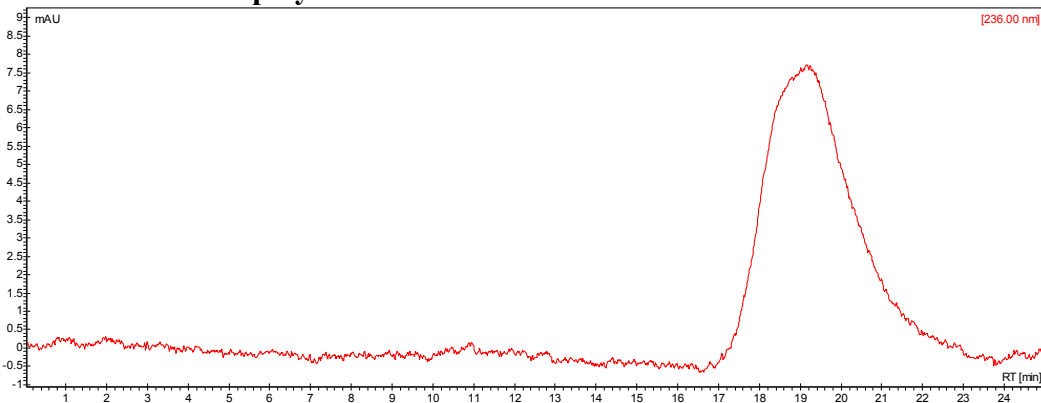
No. AI10

# Certificate of Analysis

Product Name: Poly(lactide-co-glycolide) amine endcap (28,000 Da)



- **GPC analysis of PLGA-NH<sub>2</sub> polymer**



Analysis Method: Varian Prostar system with 1 ml/min DCM flow across two Resipore 3 um columns and one Mixed E column (Varian) and with UV-Vis (PDA) detection. Calibrated against polystyrene standards

Polymer	Mn (from GPC)	Mw (from GPC)	PDI
PLGA-NH <sub>2</sub>	22935	32713	1.43