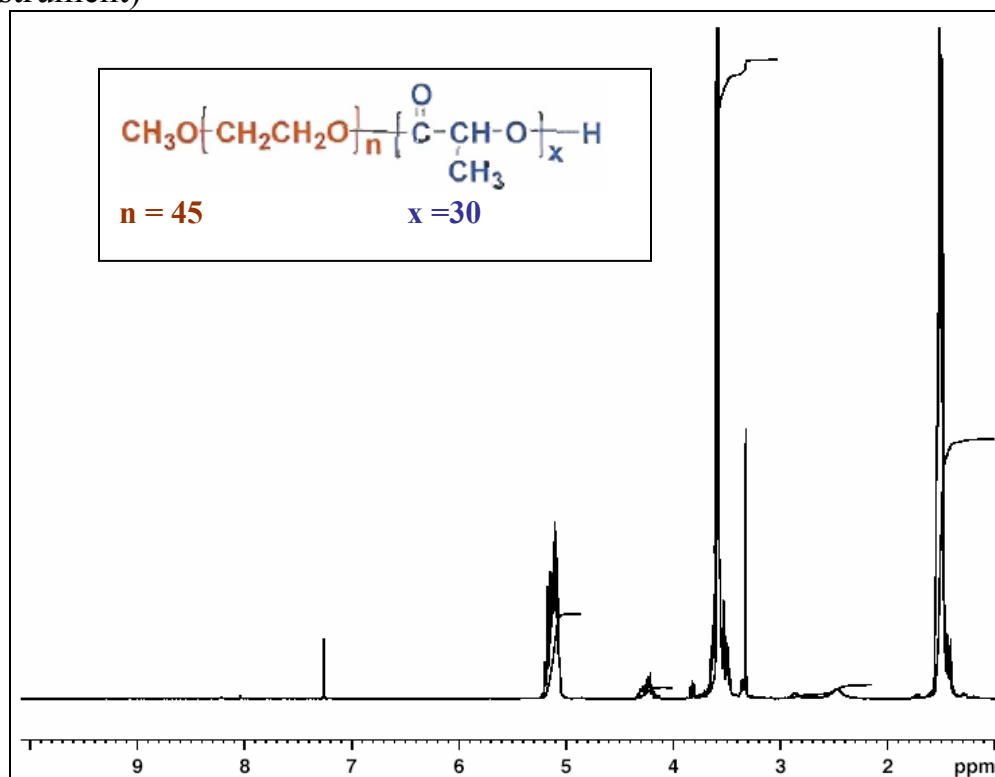


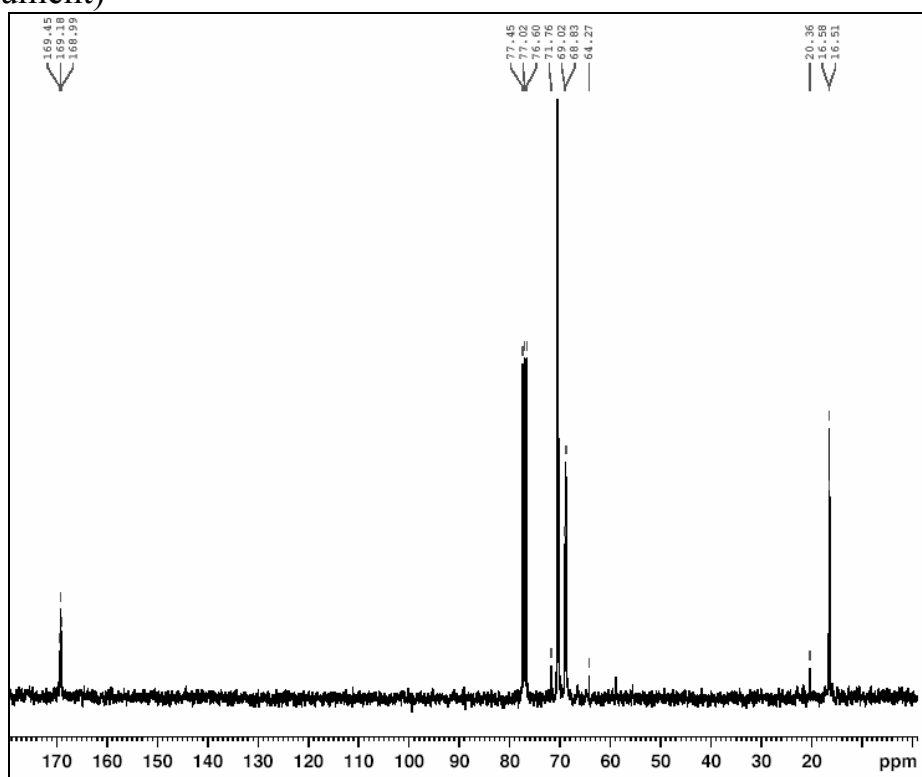
# No. 9 Certificate of Analysis

Product Name: Methoxy Poly(ethylene glycol)-*b*-Poly (D,L) Lactic Acid copolymer

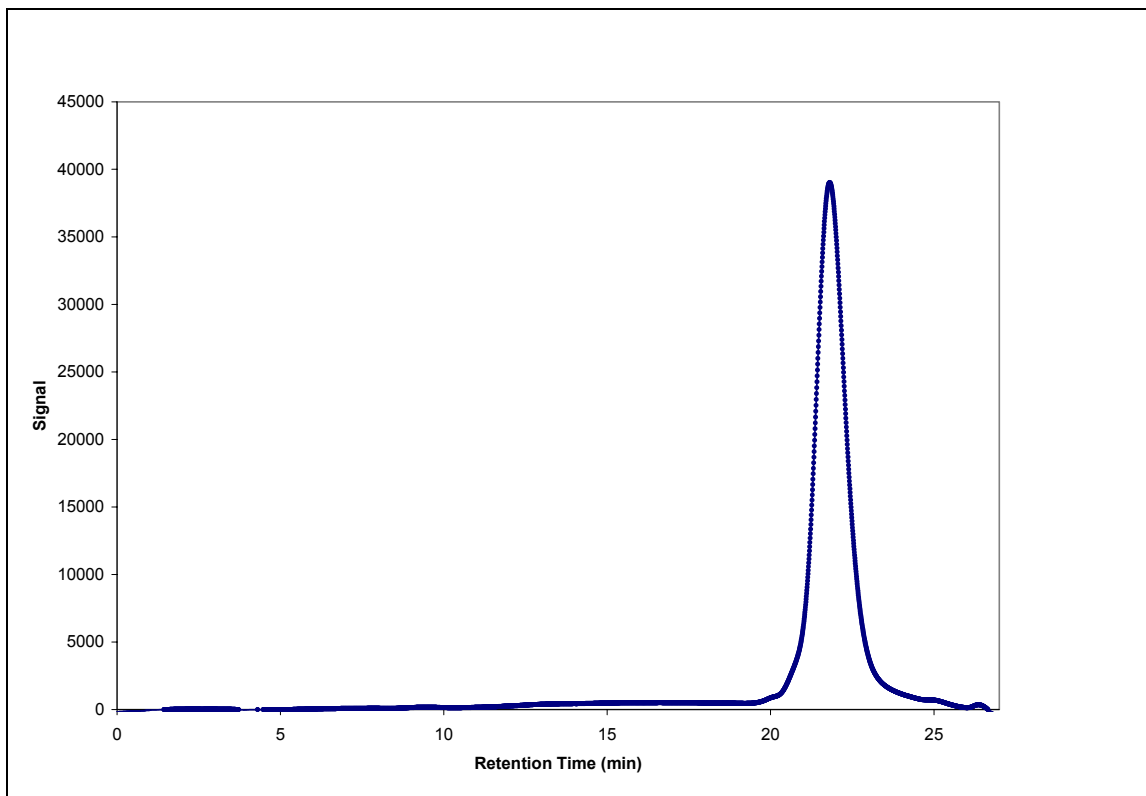
- <sup>1</sup>H-NMR Spectrum of MPEG-P(DL)LA diblock copolymer in CDCl<sub>3</sub> (Varian Inova 300 MHz instrument)



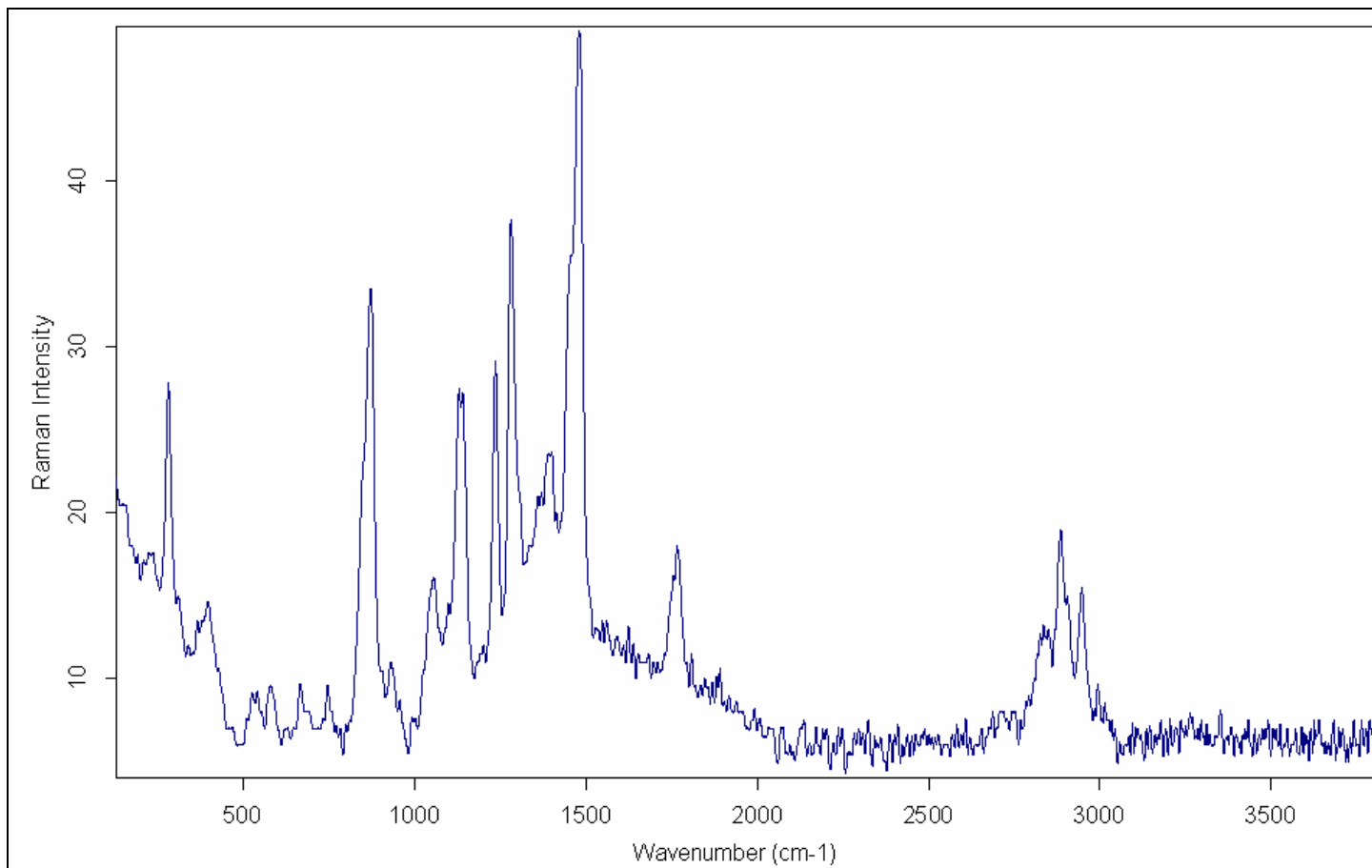
- <sup>13</sup>C-NMR Spectrum of MPEG-P(DL)LA diblock copolymer in CDCl<sub>3</sub> (Varian Inova 300 MHz instrument)



- GPC analysis of mPEG-P(D,L)LA performed on Agilent 1100 system with 1 ml/min THF flow across three PLgel 5  $\mu$ m MIXED-D and -E columns (Agilent) and RI detector . Number and weight average molecular weight calculated from poly(ethylene glycol) standards.



- Infrared Spectrum obtained by Senterra Confocal Raman Microscope (Bruker) from cast film. integration time = 1 second, average of 30 collected spectra.



Polymer	Ratio Ethylene Glycol/Lactide repeat units (from HNMR)	Mn (from GPC)	Mw (from GPC)	PDI
AK09	1.477 EG/LA	3185	4015	1.26