

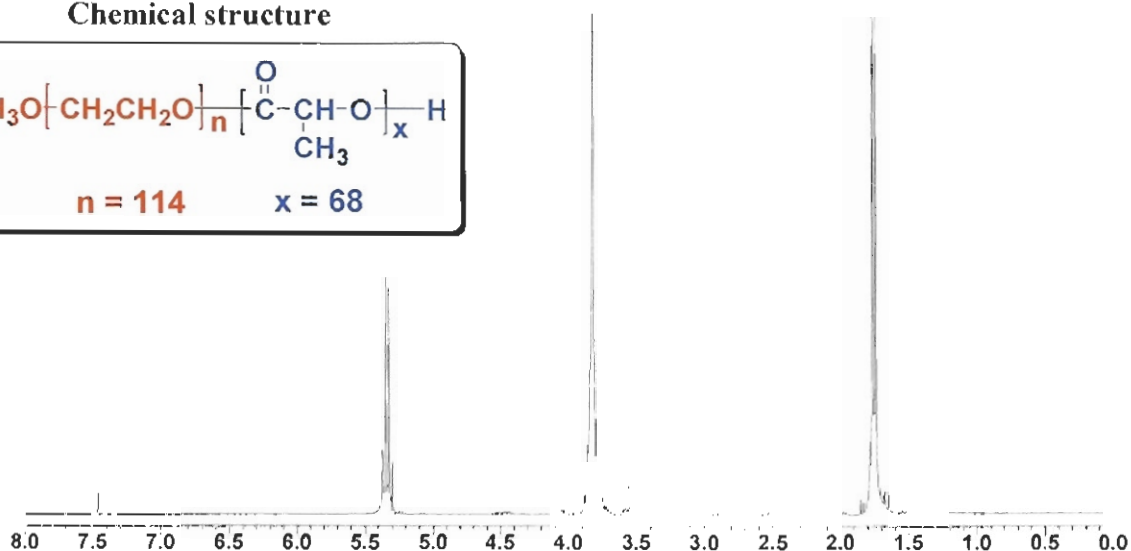
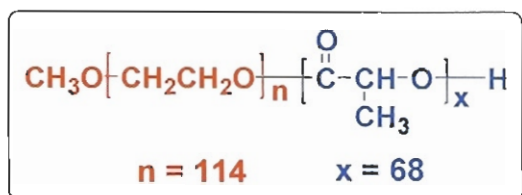
No. 7

Certificate of Analysis

Product name : Methoxy Poly(ethylene glycol)-*b*-Poly(L-lactide) copolymers

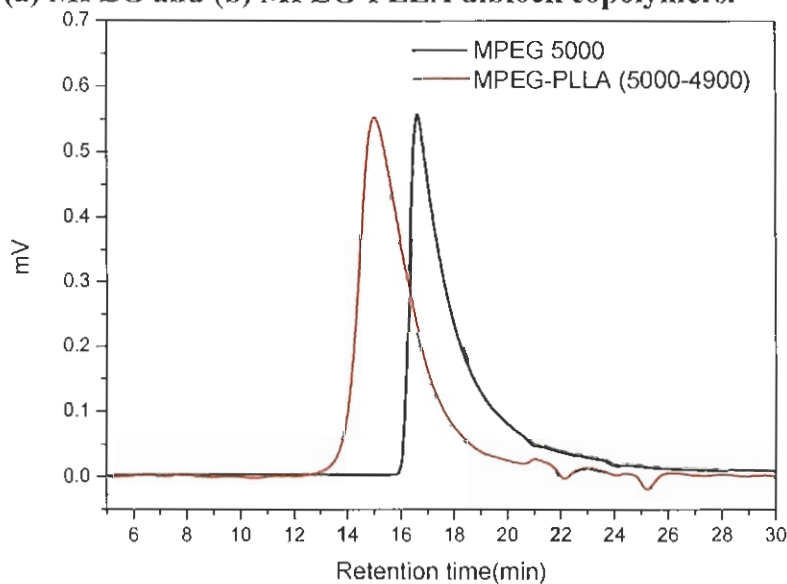
- ¹H-NMR spectrum of MPEG-PLLA diblock copolymers in CDCl₃ (Bruker 300 MHz instrument).

Chemical structure



$M_{n, \text{NMR}}$ of MPEG-PLLA copolymers : 5000-4900

- GPC curve of (a) MPEG and (b) MPEG-PLLA diblock copolymers.



Analysis method : Futecs At-3000 GPC system (Shodex RI-71 detector)
columns (Shodex K-802 and Shodex Asahipak GF-510)
elution solvent (CHCl₃), flow rate (0.8 mL/min)

Name	M_n (GPC)	M_w (GPC)	M_w/M_n (PDI)
MPEG (Initiator)	8320	8874	1.06
MPEG-PLLA (Copolymer)	13260	17468	1.31