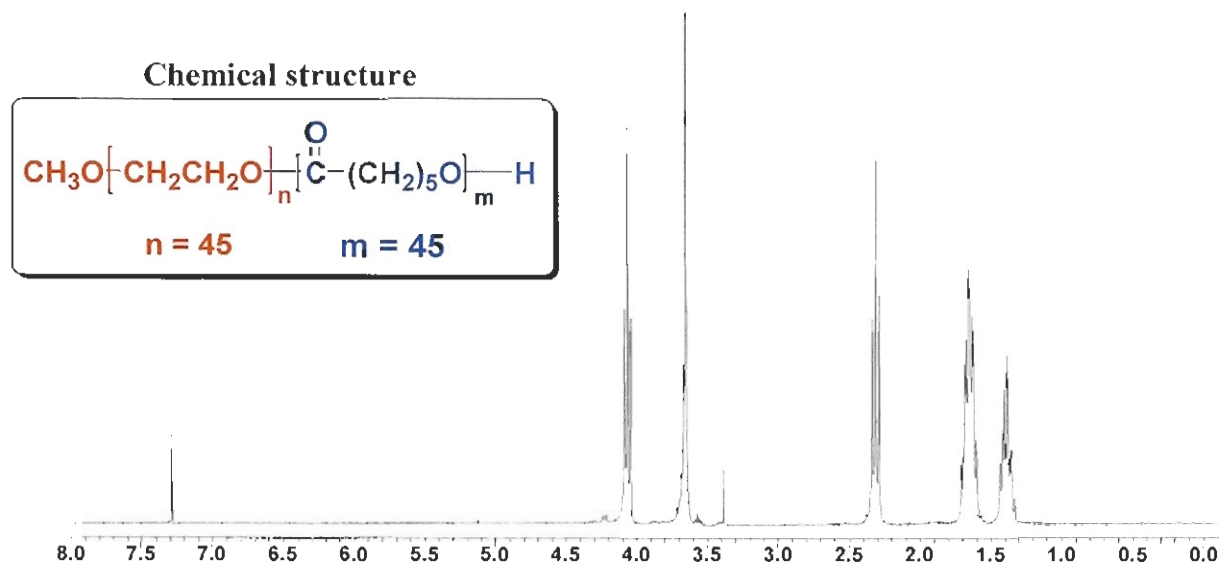


No. 1

Certificate of Analysis

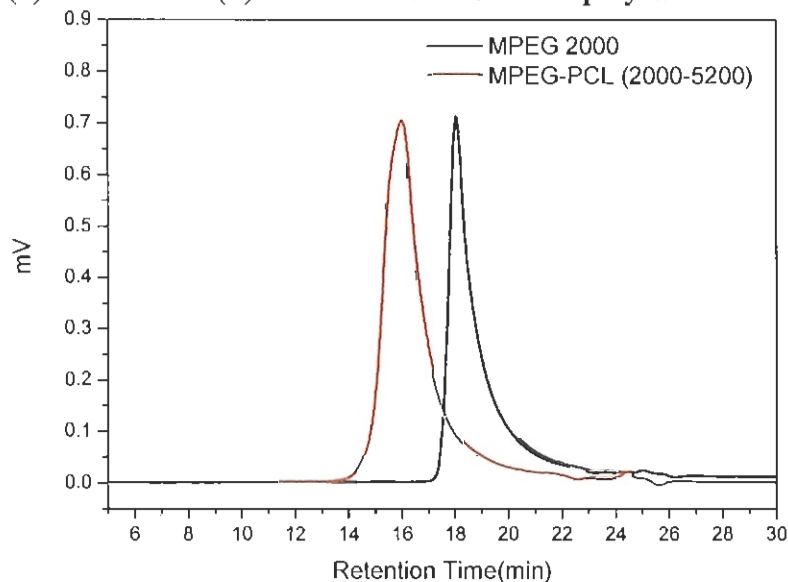
Product name : Methoxy Poly(ethylene glycol)-*b*-Polycaprolactone copolymers

- ¹H-NMR spectrum of MPEG-PCL diblock copolymers in CDCl₃ (Bruker 300 MHz instrument).



$M_{n, \text{NMR}}$ of MPEG-PCL copolymers : 2000-5200

- GPC curve of (a) MPEG and (b) MPEG-PCL diblock copolymers.



Analysis method : Futecs At-3000 GPC system (Shodex RI-71 detector)
columns (Shodex K-802 and Shodex Asahipak GF-510)
elution solvent (CHCl₃), flow rate (0.8 mL/min)

Name	M_n (GPC)	M_w (GPC)	M_w/M_n (PDI)
MPEG (Initiator)	2765	3021	1.09
MPEG-PCL (Copolymer)	8504	12407	1.45